



Hornsea Project Four: Environmental Statement (ES)

PINS Document Reference: A4.5.4
APFP Regulation: 5(2)(a)

Volume A4, Annex 5.4: Location of Offshore Cumulative Schemes

Prepared GoBe Consultants Ltd. June 2021
Checked GoBe Consultants Ltd. June 2021
Accepted David King, Orsted. August 2021
Approved Julian Carolan, Orsted. September 2021

Doc. no. A4.5.4
Version B

Table of Contents

1	Introduction.....	2
2	Location of Offshore Cumulative Schemes.....	2

List of Figures

Figure 1: Cumulative Assessment – Offshore aggregates, mines, Carbon Capture and Storage (CCS) schemes and disposal sites.	3
Figure 2: Cumulative Assessment – Offshore renewable energy (offshore wind, wave and tidal).....	4
Figure 3: Cumulative Assessment – Offshore Cables.	5
Figure 4: Cumulative Assessment – Offshore Oil and Gas.	6
Figure 5: Cumulative Assessment – Shipping Ports.	7

Glossary

Term	Definition
Cumulative Effects	The combined effect of Hornsea Four acting cumulatively with the effects of a number of different projects, on the same single receptor/resource.
Cumulative Impact	Impacts that result from changes caused by other past, present or reasonably foreseeable actions together with Hornsea Four.
Hornsea Project Four Offshore Wind Farm	The proposed Hornsea Project Four offshore wind farm project. The term covers all elements within the Development Consent Order (i.e. both the offshore and onshore components). Hereafter referred to as Hornsea Four.
Order Limits	The limits within which Hornsea Four (the 'authorised project) may be carried out.
Orsted Hornsea Project Four Ltd.	The Applicant for the proposed Hornsea Project Four Offshore Wind Farm Development Consent Order (DCO).

Acronyms

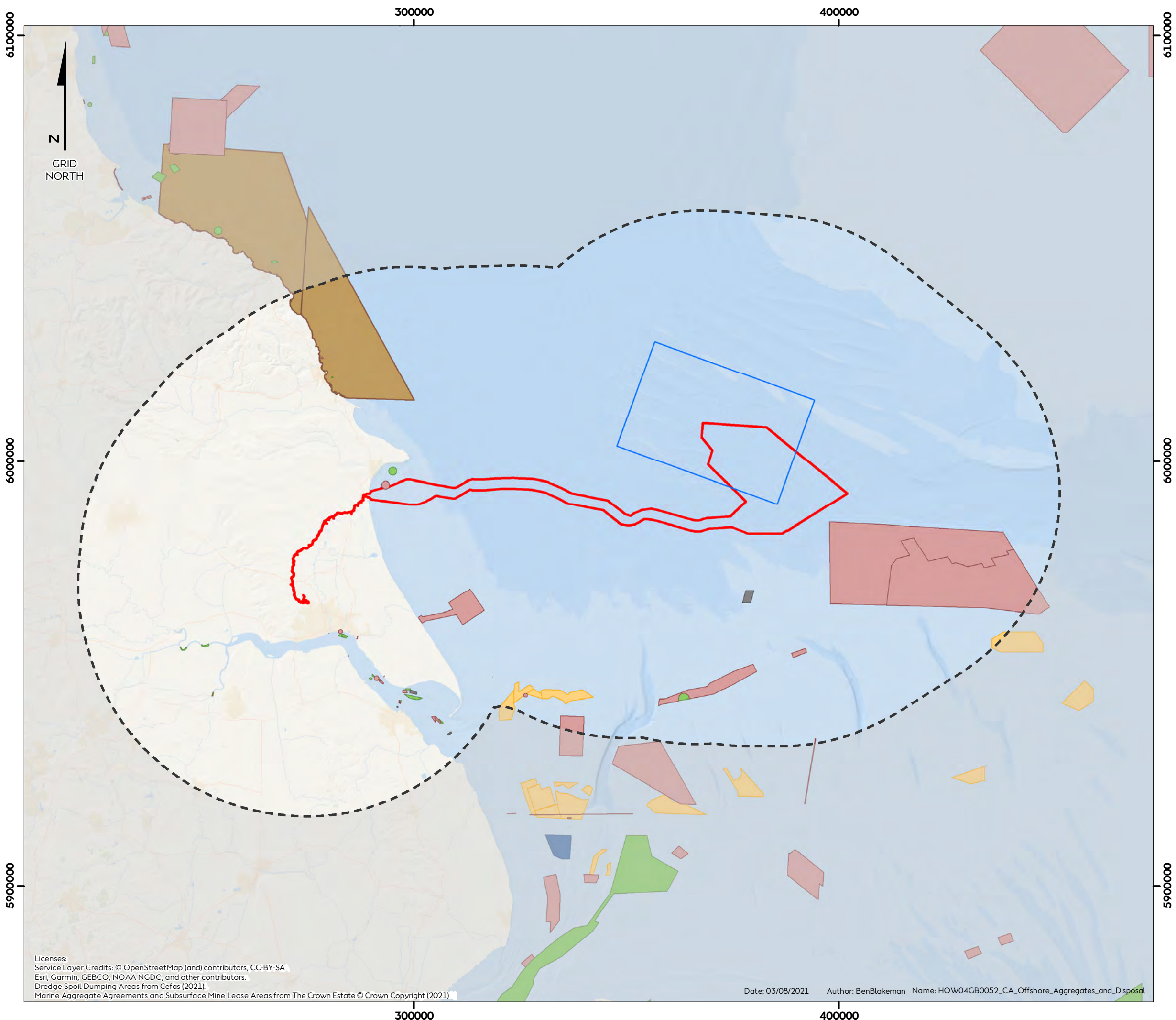
Acronym	Definition
CCS	Carbon Capture and Storage
CEA	Cumulative Effects Assessment
DCO	Development Consent Order
PINS	The Planning Inspectorate

1 Introduction

- 1.1.1.1 A fundamental requirement of undertaking the Cumulative Effects Assessment (CEA) is to identify those projects, plans and activities with which Hornsea Project Four Offshore Wind Farm (hereafter Hornsea Four) may interact to produce a cumulative effect. These interactions may arise within the construction, operation and maintenance or decommissioning phases of the project, noting that effects during decommissioning were scoped out of the assessment by the Planning Inspectorate (PINS) at the Scoping stage.
- 1.1.1.2 The objective of this annex is to provide the locations of other plans and projects included in the offshore CEA, based on the methodology (and the long-list) presented in [Annex 5.3: Offshore Cumulative Effects](#). The Onshore CEA Screening Matrix is provided in [Annex 5.5: Onshore Cumulative Effects](#), with the locations of these onshore schemes illustrated in [Annex 5.6: Location of Onshore Cumulative Schemes](#).

2 Location of Offshore Cumulative Schemes

- 2.1.1.1 All offshore projects, plans and activities considered within the CEA, based on the search areas set out in [Annex 5.3: Offshore Cumulative Effects](#) are presented in [Figure 1](#) to [Figure 5](#) of this document.

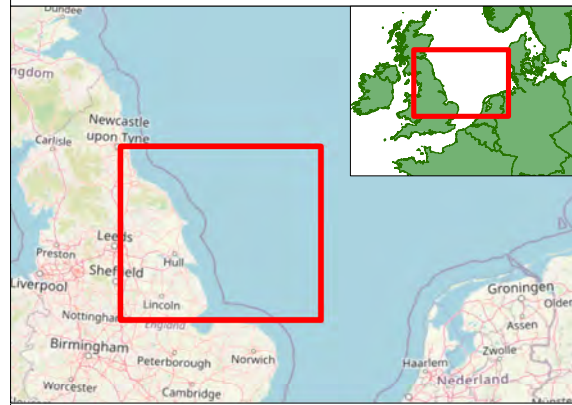


Hornsea Four

Figure 1

Cumulative Assessment Offshore Aggregates, Mines, Carbon Capture Storage (CCS) Schemes and Disposal Sites

- Order Limits
- 50km Buffer from Order Limits
- Endurance Carbon Capture and Storage Area
- Aggregate Production Area
- Subsurface Mine Lease Area
- Dredge Spoil Dumping Area (Status)**
- Open
- Closed
- Disused
- Not for Waste Disposal



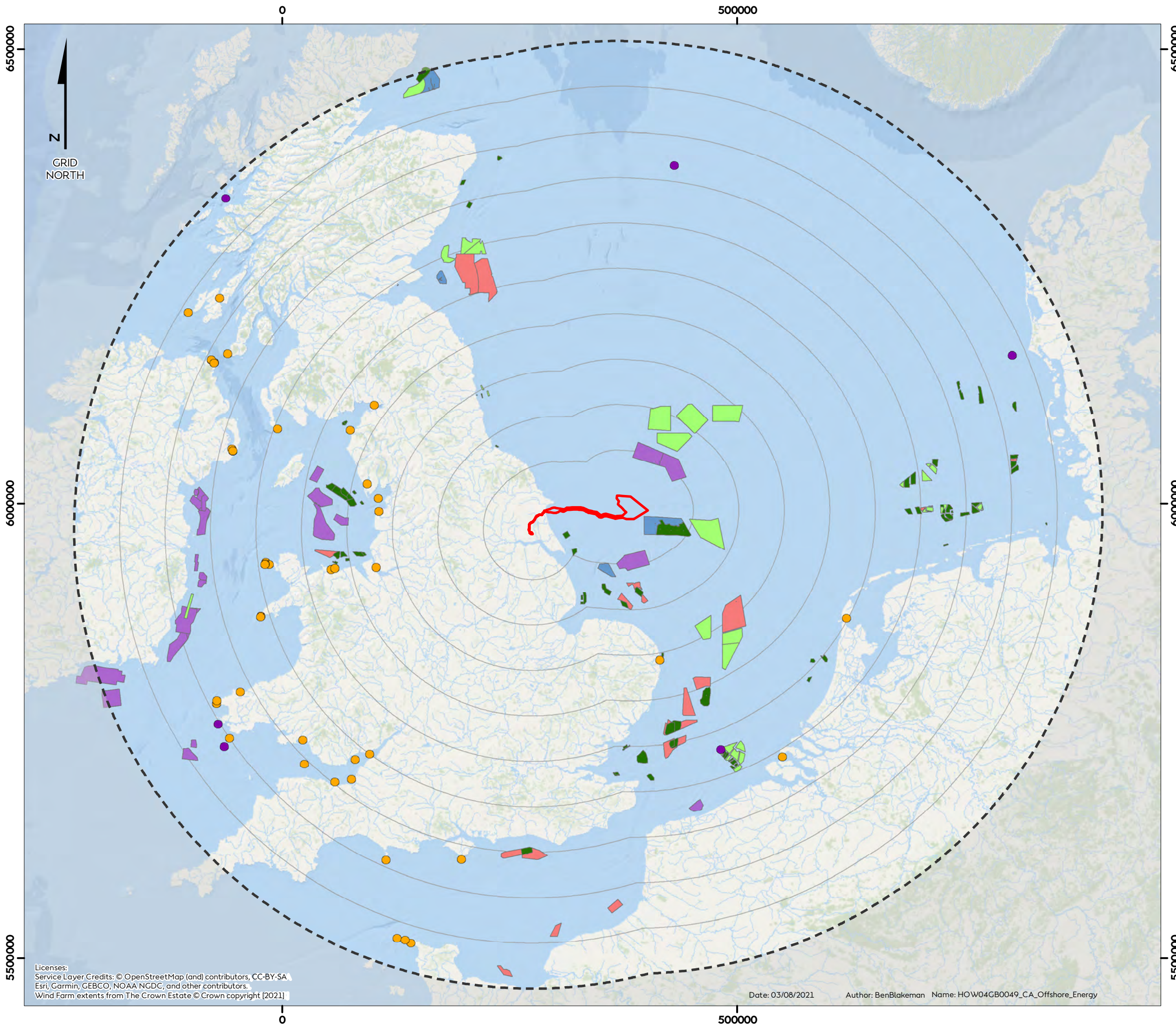
Coordinate system: ETRS 1989 UTM Zone 31N
 Scale@A3: 1:850,000

0 10 20 Kilometres

0 10 20 Nautical Miles

REV	REMARK	DATE
...	First Issue for DCO	03/08/2021

Licenses:
 Service Layer Credits: © OpenStreetMap (and) contributors, CC-BY-SA
 Esri, Garmin, GEBCO, NOAA NGDC, and other contributors.
 Dredge Spoil Dumping Areas from Cefas (2021).
 Marine Aggregate Agreements and Subsurface Mine Lease Areas from The Crown Estate © Crown Copyright (2021)



Hornsea Four

Figure 2

Cumulative Assessment Offshore Renewable Energy (Offshore Wind, Wave and Tidal)

- Order Limits
 - 500km Buffer from Order Limits
 - 50km Intervals from Order Limits
 - Tidal Projects
 - Wave Projects
- Offshore Wind Farms (Status)
- Active/In Operation
 - Under Construction
 - Consented
 - In Planning
 - Pre-planning Application



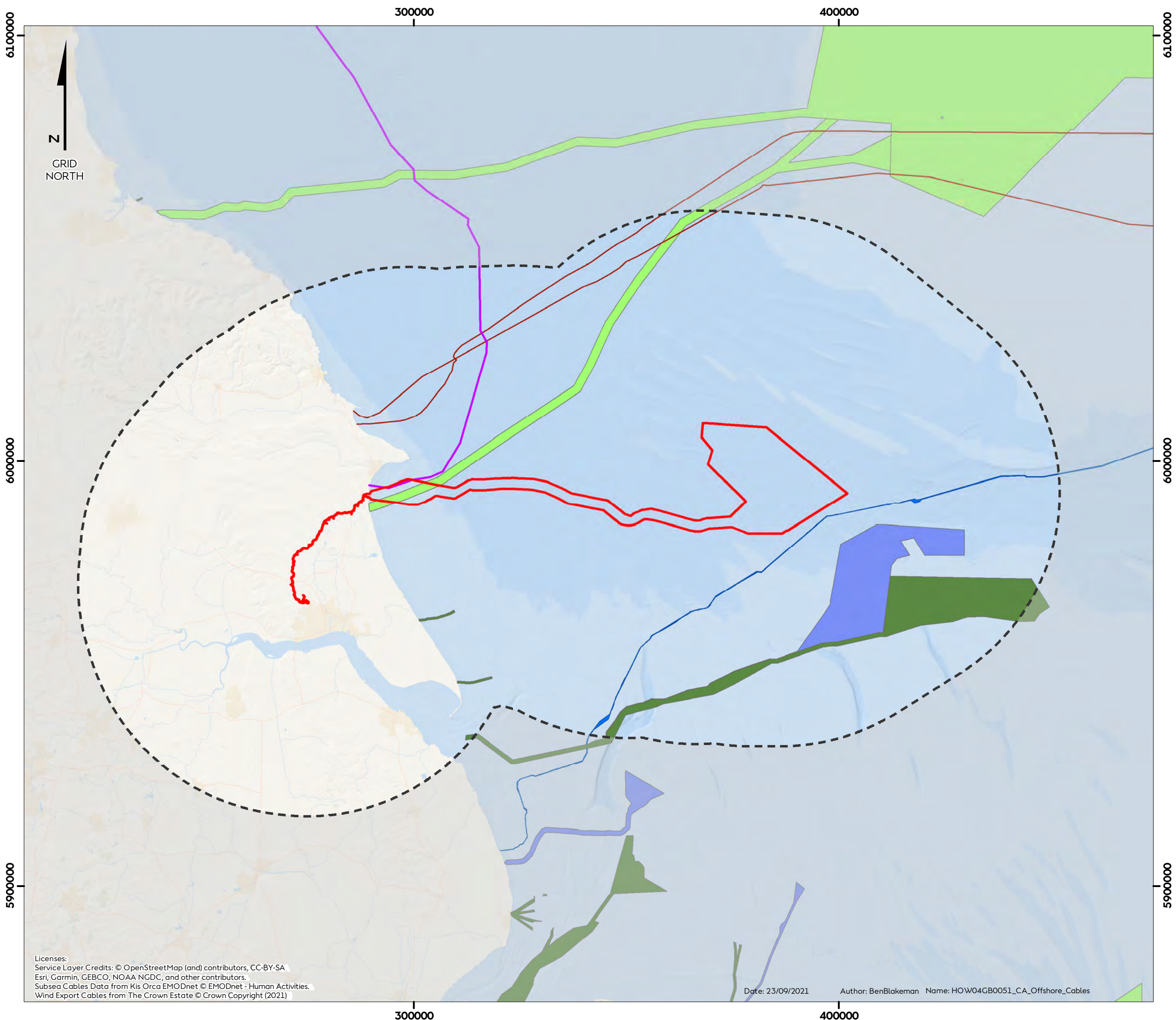
Coordinate system: ETRS 1989 UTM Zone 31N
 Scale@A3: 1:4,000,000

0 100 200 Kilometres

0 50 100 Nautical Miles

REV	REMARK	DATE
...	First Issue for DCO	03/08/2021

Licenses:
 Service Layer Credits: © OpenStreetMap (and) contributors, CC-BY-SA
 Esri, Garmin, GEBCO, NOAA NGDC, and other contributors.
 Wind Farm extents from The Crown Estate © Crown copyright [2021]



Hornsea Four

Figure 3

Cumulative Assessment Offshore Cables

- Order Limits
 - 50km Buffer from Order Limits
 - Subsea Cables (Kis Orca)
 - Scotland England Green Link 2 (SEGL2)
 - Viking Link Cable
- Wind Export Cable Agreements (Status)**
- Active/In Operation
 - Under Construction
 - Consented
 - In Planning



Coordinate system: ETRS 1989 UTM Zone 31N
 Scale@A3: 1:850,000

0 10 20 Kilometres

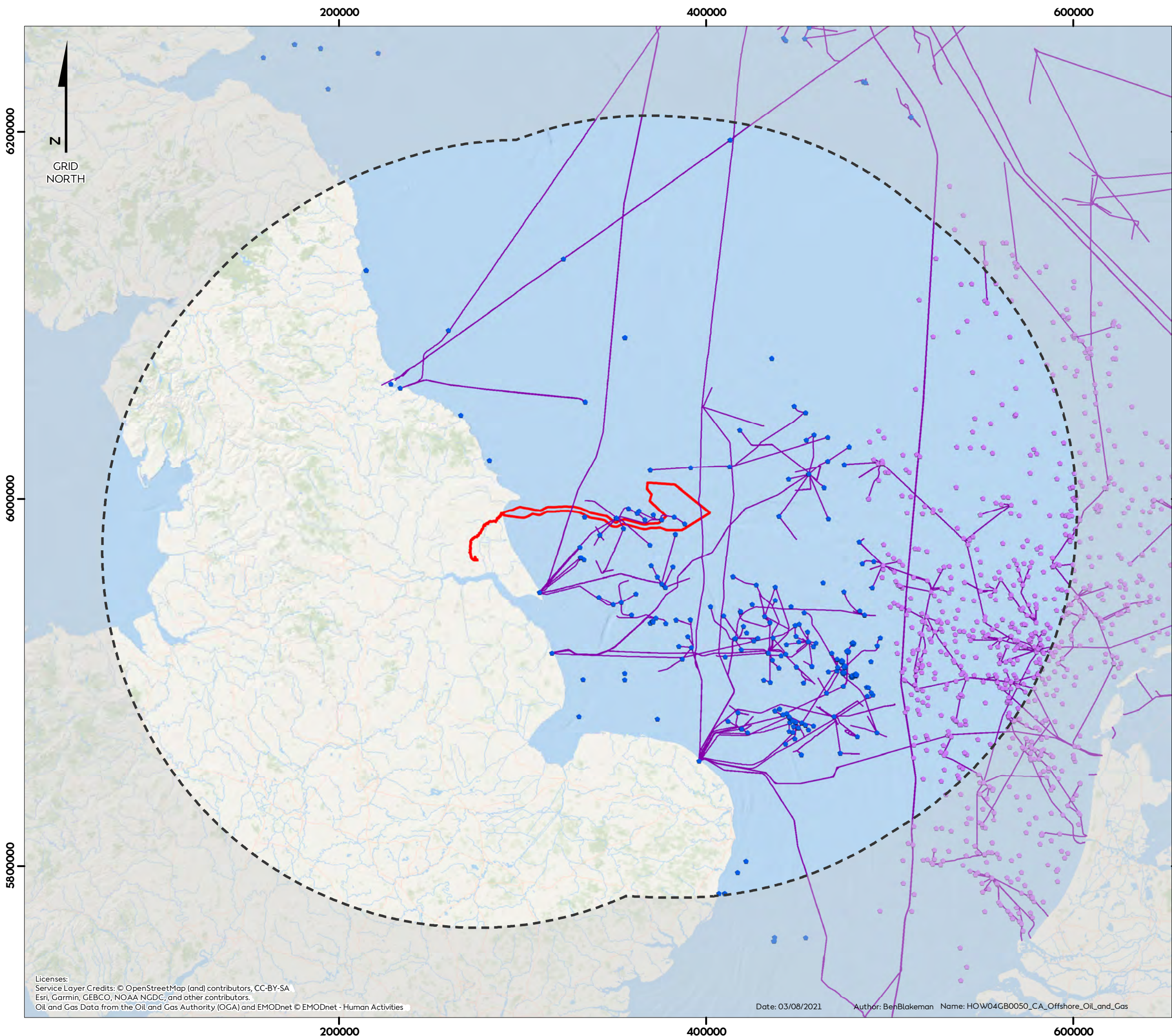
0 10 20 Nautical Miles

REV	REMARK	DATE
...	First Issue for DCO	23/09/2021

Licenses:
 Service Layer Credits: © OpenStreetMap (and) contributors, CC-BY-SA
 Esri, Garmin, GEBCO, NOAA NGDC, and other contributors.
 Subsea Cables Data from Kis Orca EMODnet © EMODnet - Human Activities.
 Wind Export Cables from The Crown Estate © Crown Copyright (2021)

Date: 23/09/2021 Author: BenBlakeman Name: HOW04GB0051_CA_Offshore_Cables

Cumulative Assessment
 Offshore Cables
 Document no: HOW04GB0051
 Created by: BPHB
 Checked by: RM
 Approved by: LK



Hornsea Four

Figure 4
Cumulative Assessment
Offshore Oil and Gas

- Order Limits
- 200km Buffer from Order Limits
- Oil and Gas Surface Features UK
- Netherlands Oil and Gas Boreholes
- Pipelines



Coordinate system: ETRS 1989 UTM Zone 31N
 Scale@A3: 1:2,000,000

0 50 100 Kilometres

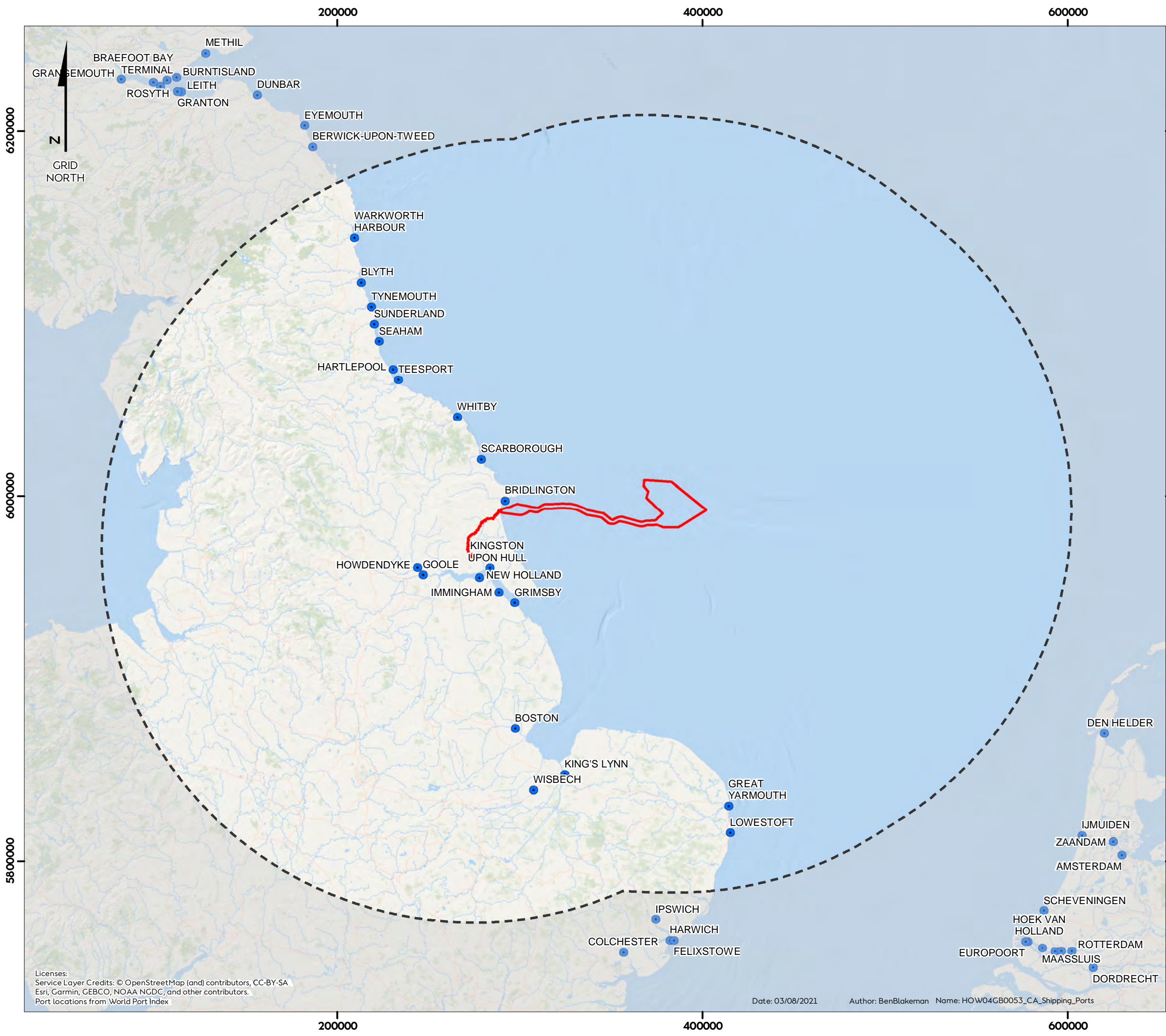
0 25 50 Nautical Miles

REV	REMARK	DATE
---	First Issue for DCO	03/08/2021

Cumulative Assessment
 Offshore Oil and Gas
 Document no: HOW04GB0050
 Created by: BPHB
 Checked by: RM
 Approved by: LK



Licenses:
 Service Layer Credits: © OpenStreetMap (and) contributors, CC-BY-SA
 Esri, Garmin, GEBCO, NOAA NGDC, and other contributors.
 Oil and Gas Data from the Oil and Gas Authority (OGA) and EMODnet © EMODnet - Human Activities



Hornsea Four

Figure 5
Cumulative Assessment
Shipping Ports

- Order Limits
- 200km Buffer from Order Limits
- Shipping Port



Coordinate system: ETRS 1989 UTM Zone 31N
 Scale@A3: 1:2,000,000

REV	REMARK	DATE
...	First Issue for DCO	03/08/2021

Cumulative Assessment
Shipping Port
Document no: HOW04GB0053
Created by: BPHB
Checked by: RM
Approved by: LK

Licenses:
Service Layer Credits: © OpenStreetMap (and) contributors, CC-BY-SA
Esri, Garmin, GEBCO, NOAA NGDC, and other contributors.
Port locations from World Port Index